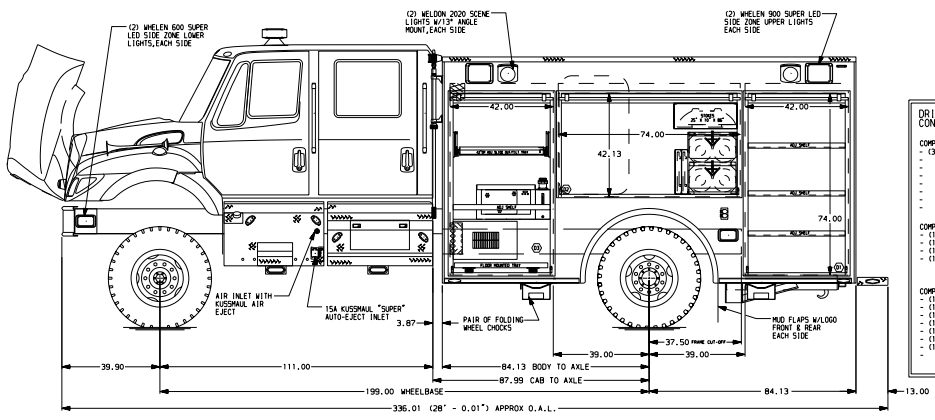
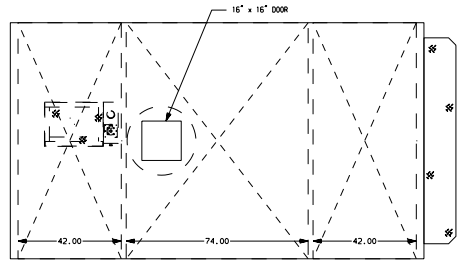
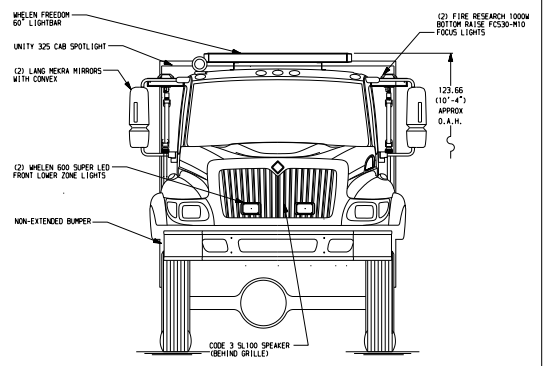
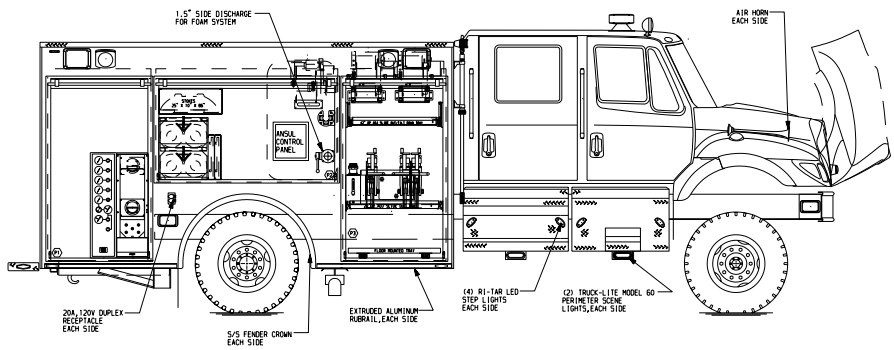
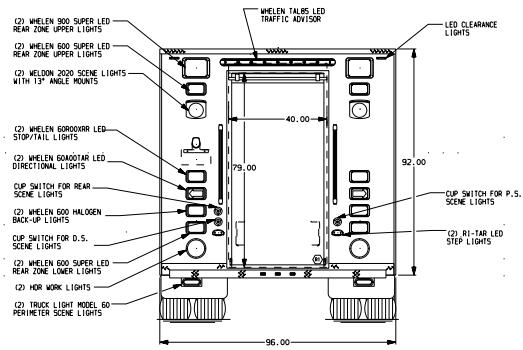


- PASSENGER'S SIDE COMPARTMENTS CONTAIN THE FOLLOWING:**
- COMPARTMENT P1 CONTAINS:**
- (1) "SPACESAVER" 2-BOTTLE FILL ENCLOSURE
 - (1) CASCADE SYSTEM CONTROL PANEL
- COMPARTMENT P2 CONTAINS:**
- (1) 100 GALLON MEXA SYSTEM TANK
 - (1) RACK FOR 3 STORES BASKET
 - (1) RACK FOR 2 BACKGROUNDS
 - (1) RACK FOR 4 CUSTOMER SUPPLIED AIR STORAGE BOTTLES
- COMPARTMENT P3 CONTAINS:**
- (1) 22" OP FLOOR MOUNTED TRAY
 - (1) 42" OP ADJ SLIDE OUT/TILT TRAYS
 - (2) HYDRAULIC BELLS W/100' OF DUAL HOSE
 - (1) MOUNTING BRACKET FOR HYD RAM
 - (2) MOUNTING BRACKETS FOR HYD SPREADERS
 - (1) MOUNTING BRACKET FOR HYD CUTTER
 - (1) HARRISON 604 HYD GENERATOR
 - (1) 22" OP ADJ SLIDE OUT TRAY



- DRIVER'S SIDE COMPARTMENTS CONTAIN THE FOLLOWING:**
- COMPARTMENT D1 CONTAINS:**
- (3) 42" OP ADJ SHELVES
- COMPARTMENT D2 CONTAINS:**
- (1) 100 GALLON MEXA SYSTEM TANK
 - (1) RACK FOR STORES BASKET
 - (1) RACK FOR 2 BACKGROUNDS
 - (1) RACK FOR 4 CUSTOMER SUPPLIED AIR STORAGE BOTTLES
- COMPARTMENT D3 CONTAINS:**
- (1) 100 GALLON MEXA SYSTEM TANK
 - (1) 22" OP FLOOR MOUNTED TRAY
 - (1) 42" OP ADJ SLIDE OUT/TILT TRAY
 - (1) CIRCUIT BREAKER PANEL
 - (1) GENERATOR METER PANEL
 - (1) HARRISON 604 HYD GENERATOR



NOTE
DIMENSIONS SHOWN ARE APPROXIMATE AND ARE SUBJECT TO MINOR DEVIATIONS AS MAY OCCUR OR BE NECESSARY IN CONSTRUCTION.
MINOR DETAILS NOT SHOWN.

CUSTOMER APPROVAL

APPROVED BY: _____

DATE: _____

REV	DATE	BY	CH	4400	NO.
07	28AUG07	EWI	TEO		
08	07AUG07	EWI	KMI		
09	17JUL07	DHC	JJS	1HC	
10	20JAN07	EWI	JJS		

Platco MANUFACTURING INC.

TITLE: ENCORE RESCUE VEHICLE
42.74.42

FOR: FORT ELLIS FIRE SERVICE AREA
FORT ELLIS, MT

19836AD

JOB NO.	19836
SCALE	1:24
DATE	
DRAWN BY	EWI
31MAY07	
CHECKED BY	JJS
05JUN07	
SHEET SIZE	D
SHEET NO.	1 of 1