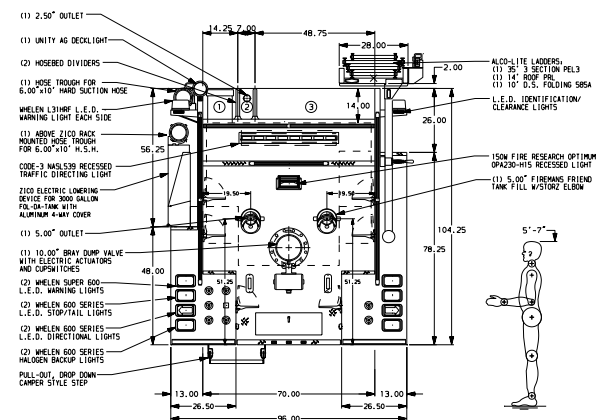


- HOSEBED CAPACITIES
- ① 200' OF 3.00" D.J. HOSE
  - ② 200' OF 3.00" D.J. HOSE
  - ③ 1000' OF 5.00" D.J. HOSE



ALUMINUM BODY

MAXIMUM O.A.L. 424.00"

NOTE  
DIMENSIONS SHOWN ARE APPROXIMATE AND ARE SUBJECT TO MINOR DEVIATIONS AS MAY OCCUR OR BE NECESSARY IN CONSTRUCTION.  
MINOR DETAILS NOT SHOWN.

1. PUMP PANEL DRAWING REQUIRED
2. RADIO ANTENNA LOCATED PER SHOP ORDER
3. MOUNTING BASE FOR ANTENNA LOCATED PER SHOP ORDER
4. ALUMINUM RACK ON CAB ROOF
5. ONE SLIDE-OUT FLOOR MOUNTED TRAY IN COMPARTMENTS P1 AND P4
6. ALUMINUM REFRIG ON REAR WALL OF TRANSCAB COMPARTMENT
7. ONE ADJUSTABLE SHELF IN COMPARTMENTS P1 AND P4, TWO ADJUSTABLE SHELVES IN COMPARTMENT P2
8. AIR INLET WITH DISCONNECT FITTING LOCATED IN DRIVERS SIDE STEP WELL
9. ONE SHIM-OUT TOOLBOARD IN COMPARTMENTS P3 AND P5
11. BATTERY CHARGER LOCATED IN CAB TRANSCAB COMPARTMENT
12. BATTERY CHARGER INDICATOR LOCATED IN DRIVERS SEAT RISER
13. ONE RETRACTABLE ACCESS LADDER TO BE STORED HORIZONTALLY ON DRIVERS SIDE FLOOR OF TRANSCAB COMPARTMENT

| CUSTOMER APPROVAL |  |              |       | JOB NO. 21931                                    |      |
|-------------------|--|--------------|-------|--|------|
| APPROVED BY:      |  |              |       | SCALE 1:24                                       | DATE |
| DATE:             |  |              |       |  |      |
|                   |  | CHASSIS DATA | TITLE | 1500-D-2500, 2500 GAL. WATER W/SIDE & REAR DUMPS |      |
|                   |  |              |       | 211" BODY, Z100 FOLDING TANK RACK, HDLR          |      |
|                   |  |              |       | FOR GIROWOOD VOLUNTEER FIRE DEPARTMENT           |      |
|                   |  |              |       | GIROWOOD, AK                                     |      |
|                   |  |              |       | DRAWN BY CR1 20JAN09                             |      |
|                   |  |              |       | CHECKED BY TH1 20JAN09                           |      |
|                   |  |              |       | SHEET SIZE D 1 of 1                              |      |
|                   |  |              |       | 21931AD  |      |