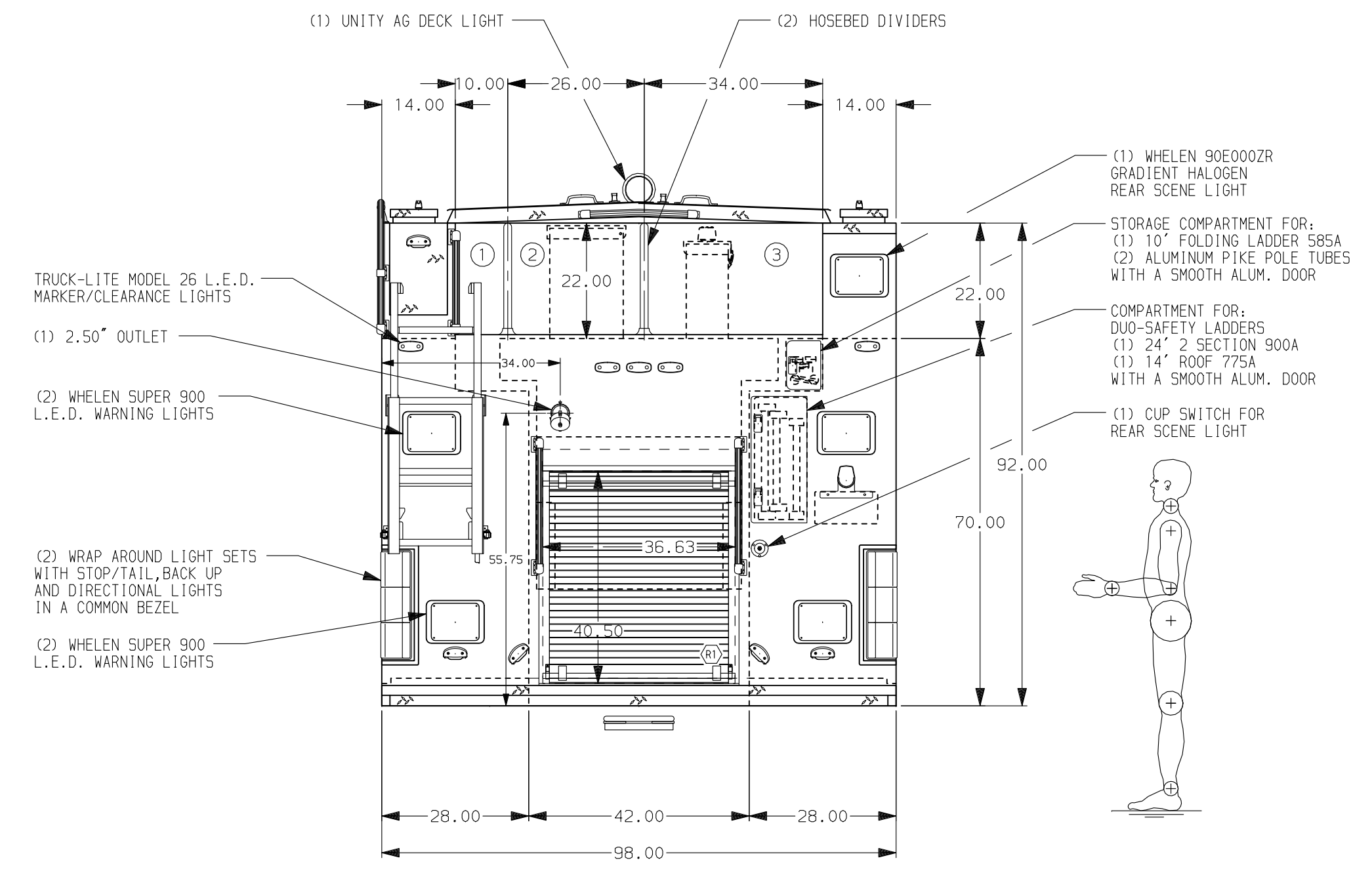
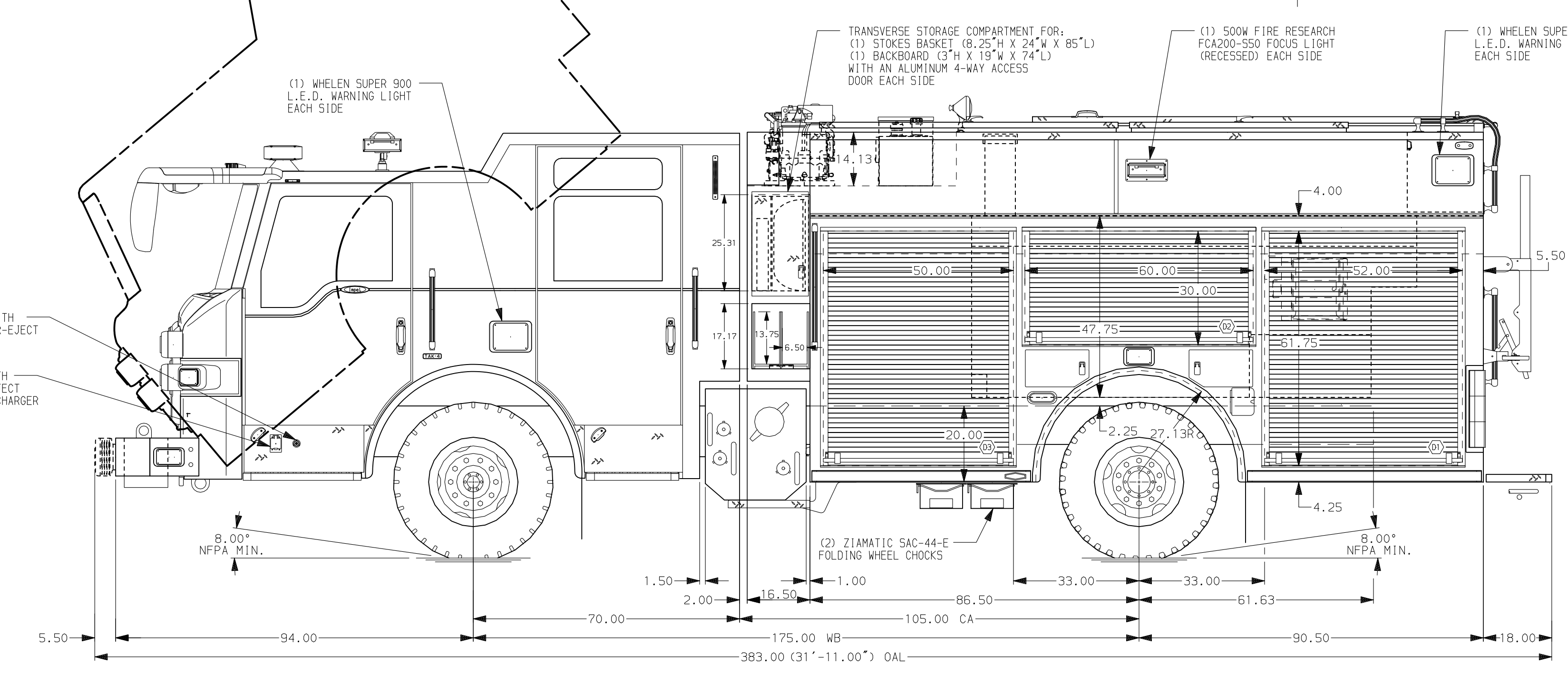


HOSEBED CAPACITIES
 ① 150' OF 2.50 D.J. HOSE
 ② 600' OF 2.50 D.J. HOSE
 ③ 1000' OF 5.00" D.J. HOSE



ALUMINUM BODY

SIDE ROLL PROTECTION

NOTE
 DIMENSIONS SHOWN ARE APPROXIMATE AND ARE SUBJECT TO MINOR DEVIATIONS AS MAY OCCUR OR BE NECESSARY IN CONSTRUCTION. MINOR DETAILS NOT SHOWN.

- BRUSHED S/STL SCUFFPLATE ON EACH CAB DOOR JAMB
- VEHICLE DATA RECORDER
- DUAL PRO BATTERY CHARGER LOCATED IN PUMP PLUMBING AREA
- ONE FLOOR MOUNTED SLIDE-OUT TRAY IN COMPARTMENTS D3, P1 & P3
- ONE ADJUSTABLE SLIDE-OUT TRAY IN COMPARTMENTS D3 & R1
- ONE ADJUSTABLE TILTING SLIDE-OUT TRAY IN COMPARTMENTS D2 & P2
- ALUMINUM PEGBOARD ON REAR WALL OF COMPARTMENTS P1 & P3
- ONE ADJUSTABLE SHELF IN COMPARTMENTS D1, P1, P3 & R1
- ONE ADJUSTABLE ALUMINUM TOOLBOARD MOUNTED ON SLIDE-OUT TRAY IN COMPT. D3
- TWO ALUMINUM PEGBOARD SLIDE-OUT TOOLBOARDS IN COMPARTMENT D1
- CIRCUIT BREAKER PANEL IN DRIVER SIDE FRONT BRASS COMPARTMENT
- L.E.D. PERIMETER SCENE LIGHTS LOCATED PER SHOP ORDER
- STAINLESS STEEL FENDER GROUNDS FRONT AND REAR
- PIERCE LOGO MUDFLAPS FRONT AND REAR
- MOUNTING BASES FOR ANTENNAS LOCATED PER SHOP ORDER
- HUSKY 12 SINGLE AGENT FOAM SYSTEM
- DUAL AMOR L.E.D. COMPARTMENT LIGHTS IN EACH BODY COMPARTMENT
- AMOR LUMA LIGHTS IN HATCH COMPARTMENTS
- ONE AKRON ELECTRIC REWIND CORD REEL ERKC-15-10 IN COMPTS. D1 & P1 WITH 200' OF 10/3 CABLE AND WOODHEAD JUNCTION BOX

CUSTOMER APPROVAL

APPROVED BY:	
DATE:	
CHASSIS DATA	
MAKE	
PIERCE	
MODEL	
IMPEL	
REV	
DATE	
BY	
CH	



TITLE: 1500-D-750P W/20 GAL FOAM CELL, 177" PUC RESCUE
 (2) XLAYS, LADDERS THRU BODY, DELUGE, GENERATOR
 FOR: WHATCOM COUNTY FIRE DISTRICT #4
 BELLINGHAM, WA
 DWG NO.: 23104AD

JOB NO.	23104
SCALE	1:24
DATE	
DRAWN BY	NPA
CHECKED BY	KBO
SHEET SIZE	D
SHEET NO.	1 OF 1